



ANNUAL
REVIEW

22
23



Content

<i>From the Founding Chancellor's Desk</i>	06
<i>From the Founding Vice Chancellor's Desk</i>	08
<i>From the Chair of Board of Trustees' Desk</i>	10
<i>Plaksha Milestones</i>	12
<i>About Plaksha</i>	19

23	<i>Undergraduate Program</i>
33	<i>Tech Leaders Fellowship</i>
40	<i>Doctoral Program</i>
42	<i>Young Technology Scholars</i>

<i>Student Achievements</i>	45
<i>Student Life</i>	49
<i>Financial Aid</i>	52
<i>Diversity, Equity and Inclusion</i>	56

58	<i>Office of Corporate Partnerships and Careers</i>
63	<i>Centers and Hubs</i>
72	<i>Key Statistics</i>
77	<i>Research Ecosystem</i>

<i>Global Academic Partnerships</i>	82
<i>Governance</i>	93



Plaksha reflects the idea of the university as a tree from which a river of learning flows endlessly, nourishing everything it touches. Indian scriptures state that River Saraswati, synonymous with learning, originated from a 'world-tree' called PLAKSHA, which grows at the foothills of the Sivaliks.

f

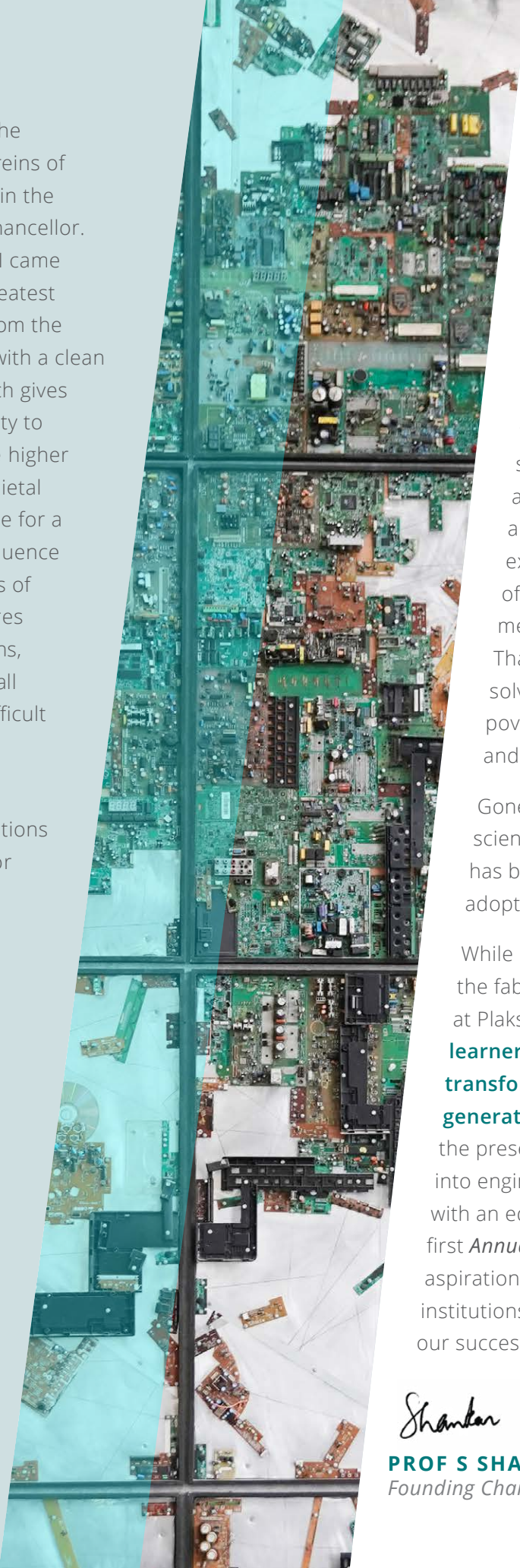
rom the

FOUNDING
CHANCELLOR'S
DESK



In November 2022, I had the pleasure of assuming the reins of this remarkable institution in the capacity of the Founding Chancellor. When accepting the honor, I came to the realization that the greatest potential of Plaksha arises from the ability to begin its programs with a clean slate. This clean slate approach gives Plaksha the brilliant opportunity to reimagine and reconceptualize higher education. Like many other societal systems, higher education is due for a disruption arising from the confluence of new technologies, new models of pedagogy and the changing desires of our students. Legacy institutions, including some great institutions all over the world, will find it more difficult to make sweeping changes in their educational model.

I have huge hopes and high expectations for Plaksha, and for what it can do for the future of higher education.



It was indeed prescient that when we embarked upon this journey almost five years ago, pushed by the vision of a group of enthusiastic young founders who fittingly named the foundation for Plaksha 'Reimagining Higher Education Foundation' (RHEF), carrying an audacity of spirit and the spirit of innovation. With the collective wisdom and philanthropy of RHEF, we decided to follow the so-called TED model of education, emphasizing the confluence of Technology, Entrepreneurship and Design Thinking.

In its first few years, Plaksha has exemplified the spirit of TED. It has introduced some of the best technological know-how to its students, it has provided them with tools to reason about technology innovation, and to learn design thinking in solving some of society's most pressing problems. Quite early on we realized that a higher education institute would need to imbue students with a startup ethos and culture. Entrepreneurship encourages them to dream big, teaches them to execute big, and equally not to be deterred by failure. The next step in our model of pedagogy is the Steve Jobs effect. It was he who gave us a sense of what it means to make a beautiful product and create a yearning for it among consumers. That's Design Thinking. Of course, Design Thinking is also integrally related to problem solving of complex societal problems such as sustainable growth and development, poverty alleviation and the digital transformation of transportation, electricity, water and other societal systems.

Gone are the days of a waterfall model of growth where innovation followed from science to technology to uptake by industry and adoption by society. The waterfall model has been replaced by a more compact spiral model where invention, innovation and adoption are intertwined and effect how we live.

While problem solving is critical to engineering, it's social component reaches deep into the fabric of society and the values that we hold dear. Keeping this in mind, the curriculum at Plaksha integrates STEM subjects with the humanities and social sciences. **Our modern learners learn to think about ethics, epistemology, and meaning in a world being transformed by AI, machine learning, augmented reality, genetic engineering, generative AI, wireless networks: 6G and beyond.** They think about original work in the presence of programming platforms such as GPT4. By integrating these elements into engineering curricula at Plaksha, we acknowledge our responsibility to provide them with an education that transcends the current analytical view. As we present to you our first *Annual Report*, you will see that Plaksha is on a growth trajectory to exemplify its lofty aspirations. But our true success will be in our being emulated by other universities and institutions around the world. That form of flattery would probably be the surest symbol of our success!

Shankar Sastry
PROF S SHANKAR SASTRY
Founding Chancellor

f rom the

FOUNDING
VICE CHANCELLOR'S
DESK



Many believe that the 21st century is India's time to shine. At Plaksha, we see this belief not just as a golden opportunity, but also as a profound responsibility. The vision? To mold this century into the most compassionate and considerate era for both humanity and our planet. Our mission? To cultivate thought leaders, innovative technopreneurs, adept problem solvers, and groundbreaking knowledge creators to make this vision a reality.

Our foundation as a modern university is built on the passion to redefine higher education. We are determined to transcend the confines of inveterate educational practices, which often promote isolated thinking and limited scholarly depth. As we champion interdisciplinarity and transdisciplinarity, we also have to grapple with the uncertainties of our rapidly evolving world.

Historically, technology has been humanity's tool—crafted, controlled, and directed by us. However, today, we stand on the precipice of a new era where our dominance over technology is challenged. The dawn of intelligent machines is upon us, with their effects already palpable in our day-to-day interactions. The looming question is: How will the interplay between humans and these intelligent entities shape our future?

The implications of this paradigm shift extend to our educational endeavors. While machines may soon surpass humans in tasks that are procedural and formulaic, from designing buildings to crafting rockets, there remains a domain uniquely ours. Our future education should focus on nurturing the inherent human traits—creativity, compassion, commitment and curiosity. How do we educate individuals to sharpen these traits along with solid technical skills so that they prioritize societal and environmental considerations in their problem-solving approach? How can we equip them to analyze and address multifaceted grand challenges?

These are the challenges that Plaksha has taken upon itself to address. Our quest is ceaseless, guiding our endeavors today and charting our path for tomorrow. Through this first *Annual Report*, I invite you to witness the sprouts of our journey, while you hum along, "we have only just begun...."

PROF. RUDRA PRATAP
Founding Vice Chancellor

from the

CHAIR OF
BOARD OF
TRUSTEES' DESK
(on behalf of all Founders)



Plaksha – an exemplar in reimagining higher education.

Plaksha University has been a dream in making for over seven years. What started as a conversation among four friends has since grown into a thriving ecosystem.

Plaksha is built from a clean slate, with a bold aspiration to reimagine higher education. While we are in our humble beginnings, it is the collective aspiration and boundless potential of Plaksha that is captured within the pages of this *Annual Report*.

Since the launch of the university in 2021, it is emerging as a **nucleus of the brightest minds** - highly distinguished academic leaders, a dynamic team passionate about the mission, and successful founders who bring an entrepreneurial action bias.

Plaksha students are handpicked through a unique admission process that looks for curiosity, intellectual rigor and a builder mindset. The class is gender diverse, socio-economically diverse and hails from across major cities and Tier 2/3/4 towns. Over 60% students are on scholarship, many of whom are first generation learners who struggle to afford or navigate the complex admissions process in India.

Plaksha's approach is underpinned by a resolute belief that interdisciplinary education, innovation and the transformative power of technology can be harnessed to tackle society's most pressing challenges.

Due to a confluence of factors, India can play an anchor role in the Global South and create **scalable models to solve grand challenges**. India's UPI architecture is an exemplar of this. With a mission-driven faculty team, Plaksha aims to galvanize impactful solutions in clean energy, sustainable and precision agriculture, water security, and equitable and personalized health through cutting-edge research centers.

We are at an inflection point today. Plaksha 1.0 was about creating a unique product and establishing a proof of concept. From scribbles on a whiteboard, we went to a 639,000 sq. ft. campus, distinctive undergraduate and graduate programs launched, two funded research centers, 233 exceptional students and 33 founding faculty.



First Founders day (December 17, 2022)

We are now moving to Plaksha 2.0 which will take the ambition to the next level and focus on driving the flywheel of excellence that will shape the course of the university.

A metaphor to think about Plaksha is a diamond. The brilliance of a diamond comes from the interaction among its various faces. All faculty, founders, students and team members at Plaksha represent the individual faces of this diamond. We build on each other's distinct perspectives and collectively we shine.

As we look ahead, we are filled with optimism about the impact Plaksha will have on higher education not just for India, but also the world.

NEERAJ AGGARWAL
Chair of Board of Trustees



Scan to explore
Plaksha's journey



PLAKSHA

MILESTONES

JUNE 2018
Young Technology Scholars program is launched in Gurugram



NOV 2017
Academic Advisory Board is constituted



JUNE 2015 -17
Birth of an idea to reimagine technology education



JAN 2019
University is officially named Plaksha



FEB 2019
Foundation stone is laid in Mohali



AUG 2019
Founding Tech Leaders Fellowship cohort arrives in Gurugram



NOV 2021
Founding undergraduate cohort arrives on campus



JULY-AUG 2021
Founding faculty arrive on campus



OCT 2021
Plaksha University gets legislated



MAR 2021
Founding Vice Chancellor- Prof. Rudra Pratap - takes office



AUG 2022
PhD scholars arrive on campus



DEC 2022
Prof. S. Shankar Sastry is formally welcomed as Founding Chancellor



DEC 2022
First in-person Founders Day on campus



JAN 2023
First research center gets funded





About Plaksha

Founded by a global community of more than 100 entrepreneurs, technology and business leaders and corporates, Plaksha envisions to reimagine technology education and research for India and the world. Plaksha has forged strong partnerships with UC Berkeley, Cornell University, Purdue University, UC San Diego and IISc Bengaluru to cultivate an ecosystem of research and innovation. The vision of the university is to nurture and empower the next generation of catalytic leaders. Plaksha collapses the traditional boundaries of engineering and promotes interdisciplinary learning by combining technology, design and entrepreneurship.

Plaksha's sponsoring body, Reimagining Higher Education Foundation (RHEF) is a Section 8 not-for-profit company. It was set up in 2017 with a mission to convert the idea of Plaksha into a reality. In February 2019, the groundbreaking of Plaksha's campus in Mohali took place. In November 2021, the 50-acre campus opened and undergraduate classes commenced on campus.



Scan to explore
Plaksha's vision

VISION

Plaksha's vision is to produce bold, ethical leaders of tomorrow who transform the world through creative engineering solutions to address the society's grand challenges. This is being done by creating an environment where interdisciplinary academic pursuits and cutting-edge research take place within a framework of humanistic values.



Engineering students engaged in finding solutions to society's grand challenges

PILLAR 01

Reimagining technology education

Interdisciplinary curriculum integrating technology, liberal arts and design. Hands-on pedagogy and focus on self-development.

PILLAR 02

Fostering tech innovation & entrepreneurship

Entrepreneurial mindset in faculty and students, innovation culture and enabling ecosystem, mentorship and networks.

PILLAR 03

Addressing grand challenges

Research centers focused on solving grand challenges through impact-focused research and tomorrow's technologies.

VALUES

Every student, faculty and executive team member at Plaksha embodies certain values – Curious, Rigorous, Enterprising, Authentic, Thankful and Exemplary. These are called **CREATE**.

CURIOS – Be open to explore, to be in awe of the world and its possibilities, to go where no person has gone before.

RIGOROUS – Be complete, consistent and thorough in plans and action, leaving no stone unturned.

ENTERPRISING – Be creative, agile and inventive in thought and action, without being constrained by circumstances.

AUTHENTIC – Be true to oneself, colleagues and organization, in ways that are enterprising.

THANKFUL – Be appreciative and seek out opportunities to acknowledge the good around us, and positively deal with situations of discomfort.

EXEMPLARY – Embody all the values of being Curious, Rigorous, Enterprising, Authentic and Thankful, and be a role model in one or more.



Undergraduate Program

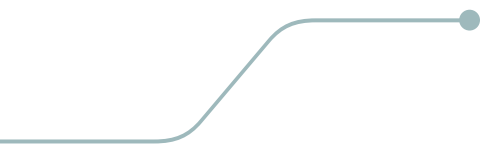


The undergraduate majors offered at Plaksha are unique, cutting-edge, forward-looking and aligned with the needs of the 21st century. The curriculum is at the intersection of cutting-edge tech, design and entrepreneurship. It ensures students focus on technical learning and are equally informed across subjects including humanities and social sciences.

FRESHMORE

BTech has a Freshmore curriculum that pioneers a path of integrated learning. Freshmore is a combination of two semesters – Freshman and Sophomore.





In the first three semesters, all undergraduates follow a unified path immersing themselves in foundational STEM subjects and technical core courses. The Freshmore curriculum also kindles exploration through communication, design thinking, economics and social science. In the fourth semester, students select their major.

MAJORS

Plaksha offers four interdisciplinary majors.



BTech Class of 2026 during the orientation ceremony.

COMPUTER SCIENCE & ARTIFICIAL INTELLIGENCE

This program was developed keeping in mind the increased correlation between computer science and artificial intelligence, machine learning and human intelligence. In the future, computing systems will be pervasive and the interface of human and artificial intelligence will be a source of future grand challenges and opportunities for innovation.

ROBOTICS & CYBER-PHYSICAL SYSTEMS

Solutions to grand challenges increasingly require reaching across the boundaries of the cyber, physical and human worlds. This program has been designed to target the growing and unmet needs at the intersection of computing, mechatronics and human behavior. It is to enable students to design intelligent engineering systems that interact with humans and the environment.

BIOLOGICAL SYSTEMS ENGINEERING

This program combines the power of biology, computing and engineering. It aims to tackle human and planetary health challenges. It enables students to combine omic technologies with Artificial Intelligence (AI) and Machine Learning (ML) to engineer solutions for health of humans and planets. Its vision is to transform convergence of data, digital health and biology.

DATA SCIENCE, ECONOMICS & BUSINESS

This major is at the nexus of data science and the study of how humans think, behave and take decisions, how our society works, and how global economic and financial markets operate. Students are encouraged to explore current and relevant themes. They create real-world applications to solve societal challenges that emerge at the intersection of these varied subjects.





“The best part about Plaksha is how engineering education has been redesigned drastically. We have courses on design thinking and philosophy along with core technical subjects and it’s amazing how they all tie together. Every time I leave the classroom, I feel like I have learned something that is vital for my future.”



VEDIKA AGARWAL
BTech Class of 2025



Scan to explore innovation at ILGC



Right: Team Portable Farming created a sustainable, organic box to grow fresh vegetables.

Extreme Right: A biomimicry-inspired aircraft by Team Ornithopter has applications in education, military and aviation.

Bottom: Students collaborating for a project.

Bottom Right: Prof. Bill Oakes, Director, Engineering Projects in Community Service, Purdue University, at the Plaksha campus for the launch of GCSP.

INNOVATION LAB AND GRAND CHALLENGES STUDIO

Laying the foundation for a 'problem-solving' mindset the Innovation Lab and Grand Challenges (ILGC) studio introduces grand challenges and continues across eight terms.

Students embark on this integrated, project-based journey in the first semester and work on different projects throughout the four-year program. They are exposed to different grand challenges and project areas, design cycle, grand challenge thinking, geopolitics and global awareness and entrepreneurial mindset.



PLAKSHA SUMMER INNOVATION PROGRAM

An initiative of Info Edge Center for Entrepreneurship (see page 66), the Plaksha Summer Innovation Program (PSIP) is an intensive 45-day initiative designed to cultivate robust problem-solving abilities and foster an entrepreneurial mindset in participating students. Handpicked teams of students receive a one-time grant of ₹30,000 and are partnered with faculty and industry mentors to guide them on their projects. The culmination of the program is a Demo Day where each team presents their idea.



GRAND CHALLENGE SCHOLARS PROGRAM

Plaksha's Grand Challenge Scholars Program (GCSP) is a combined curricular, co-curricular and extra-curricular program. It prepares students to become tomorrow's engineering leaders to solve the grand challenges facing society. Through completion of the five components of the program, students engage in research related to their selected grand challenge, explore interdisciplinary coursework, gain an international perspective, engage in entrepreneurship, and give back to the community through service learning. Students are uniquely prepared to collaborate and succeed in a transdisciplinary and global environment.

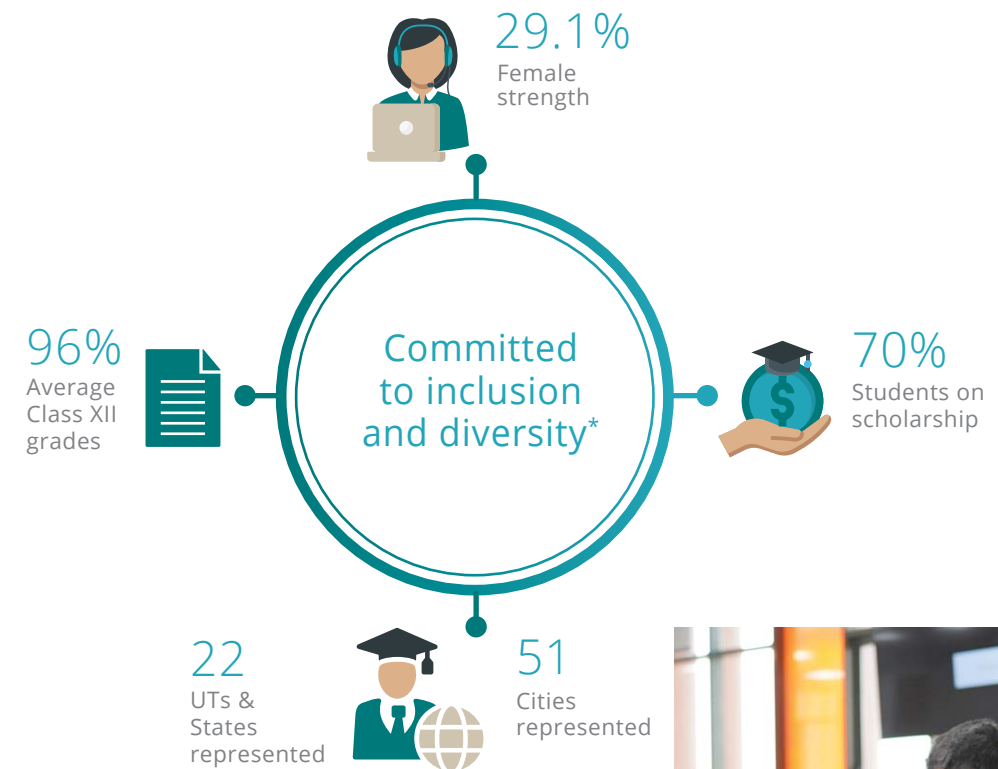




Enhancing the interest of visually impaired students in STEM and promoting the spirit of inclusivity.

ADMISSIONS AND OUTREACH

An year round effort leads to a diverse BTech cohort. The student body on campus includes gold medalists, National Olympiad winners, authors and young entrepreneurs.



A holistic two-stage admissions process ensures all selected students are passionate about technology, have a creator-builder mindset, explore all facets of technology and innovation, and aspire to be tech leaders, entrepreneurs, researchers and problem solvers.

*As of March 31, 2023



Tech Leaders Fellowship

Tech Leaders Fellowship* (TLF) is a postgraduate program which aims to create technology leaders from India, for the world. The curriculum has been co-designed and co-delivered with the Sutardja Center for Entrepreneurship and Technology at the University of California, Berkeley. The program integrates coursework in artificial intelligence, machine learning, design thinking, applications of data science, entrepreneurship and an understanding of self and leadership.



HIGHLIGHTS*

1-year

PROGRAM
AI-ML, data science,
design thinking
and leadership.

30+

GLOBAL FACULTY
From UC Berkeley,
Purdue University,
University of
Pennsylvania & IITs.

160+

ALUMNI
Working as Data
Scientists, Product
Managers and
leading their
own ventures.

30+

COURSES
AI-ML core, capstones,
entrepreneurial and
leadership coursework,
& real-world projects.

2.4x

SALARY JUMP
Increase in
compensation after
completing TLF.

₹38.2 lpa

AVERAGE SALARY
of top 10% of the
cohort.



ACADEMICS

In the Tech Leaders Fellowship students are taught by leading faculty from around the world and mentored by industry leaders. The Fellowship is spread over eight terms, each averaging five weeks, and has four intertwined threads:

Artificial Intelligence and Machine

Learning Core: Foundation in math and programming followed by courses and labs in AI-ML. Coursework is supplemented by labs and live projects. Advanced technical courses in Computer Vision and Natural Language Processing are also offered.

Visiting Faculty: Alexander Fred-Ojala, UC Berkeley; Dr. Rajeev Barua, University of Maryland; Dr. Monojit Choudhury, Turing India, Microsoft.

Design Thinking and Applications of

Data Science: The course includes a series of courses ranging from design thinking, systems thinking, human computer interaction, data visualization to product management.

Visiting Faculty: Dr. Jitesh Panchal and Dr. Robert Kenley, Purdue University; Dr. Prakarsh Singh, Senior Economist, Amazon; Dr. Sebastian Foucaud, Palo Alto Strategy Group.

Entrepreneurial Challenge Lab and

Capstones: 12-week Challenge Lab is a mini-entrepreneurial journey where students work in teams to identify a pertinent problem, conceptualize an idea, test the market, build a prototype, and learn the art of pitching to potential investors. TLF scholars also embark on an eight-week industry/research capstone project in the domain of data science-machine learning.

Visiting Faculty: David Law and Mark Searle, University of California, Berkeley.

Understanding Self and Leadership:

Scholars introspect about the best contribution they can make to the world through courses in goal setting, self-reflection, group dynamics and leadership.

Visiting Faculty: Dr. Dwight Jaggard, University of Pennsylvania; Dr. Rachel Dzombak, Carnegie Mellon University; Ken Singer, University of California, Berkeley.





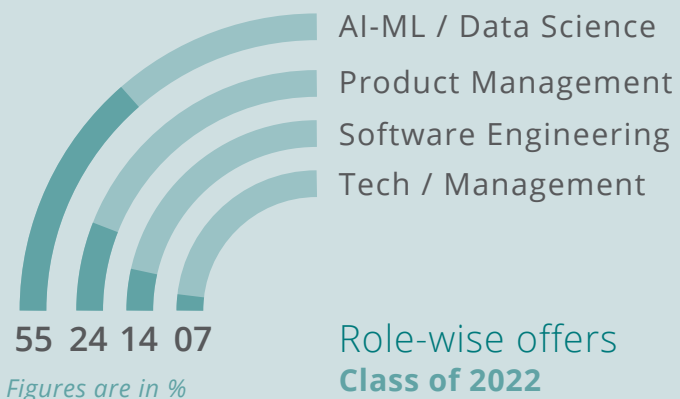
“What Plaksha gave me was the permission to dream, by helping me understand that successful people are just like us, at one time they started from our position.”



RAMYA YELLAPRAGADA

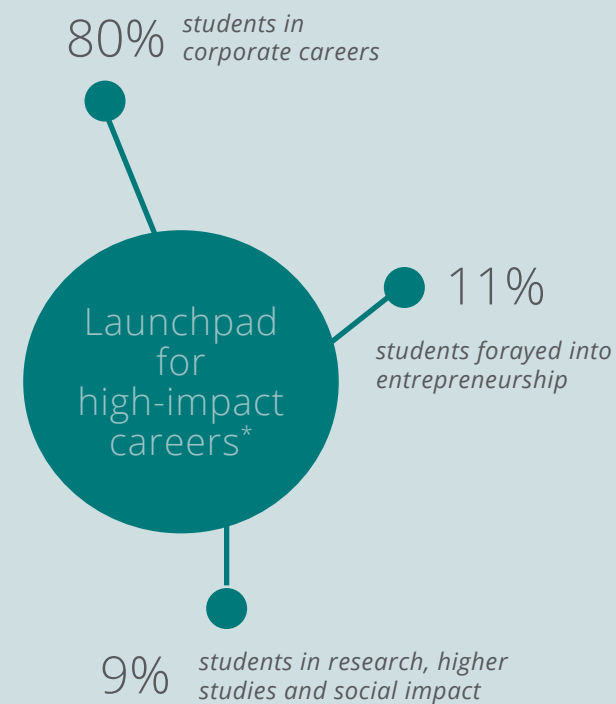
TLF Class of 2020

Co-founder of Marbles (formerly Stimveda)



PLACEMENTS

Students landed dream roles in multinational organizations including Amazon, BCG, Fractal and Arcesium. Those who opted to pursue higher studies enrolled in top international universities. Graduates from TLF have also built high-impact tech startups.



My journey at Plaksha TLF in a single word, would be ‘transformative’. I understood that people are the real currency and with such bright minds around you, you’re bound to grow and value your network. This was the most important treasure for me on both personal and professional fronts.

BHAWNA RUPANI,
TLF Class of 2022

Placed as Data Scientist at HRS Group



- Banking, Financial Services & Insurance
- E-commerce
- Engineering / Technology
- Education Tech
- Information Tech
- Travel Tech
- Health Tech
- Social Impact

*Across all TLF cohorts



CONGRATULATIONS TLF CLASS OF 2022



Scan to view the TLF convocation

TLF AT A GLANCE

The admissions process for TLF is rigorous and holistic.



24.3
Average age



78%
With prior work ex



20
States/UTs represented



23%
Female strength



The first cohort of PhD scholars with faculty and founders.

Doctoral Program

The PhD program at Plaksha puts emphasis on grand challenges including health, agriculture, water security and clean energy.

ACADEMICS

The PhD program was launched in 2022. It aims to produce scholars with excellent research skills who can make significant contributions to the current and future grand challenges. Our first cohort of 10 scholars is working on projects in technology as well as humanities and social sciences.



Scan to explore PhD research stories



The research areas available for PhD scholars at Plaksha are

- » AI-ML and Computer Science
- » Applied Mathematics
- » Biosystems Engineering
- » Computational Biology
- » Economics
- » Engineering Education
- » Fluid Mechanics
- » Humanities and Social Sciences
- » Robotics and Deep Learning
- » Sensors Technology and IoT
- » Water Technology

During the course of the program, PhD scholars are required to conduct cutting-edge, original research in collaboration with their research supervisors and other experts in the field. This is followed by communicating their research in top-tier peer reviewed journals and participating in leading conferences in their field of study, creating new technologies, IPR, etc.

Also, Plaksha and **DaveAI** offer a joint PhD in Artificial Intelligence.

ADMISSIONS AND OUTREACH

The admission process for the PhD program is rigorous and aims to understand the journey (academic, personal and professional) of the applicant.

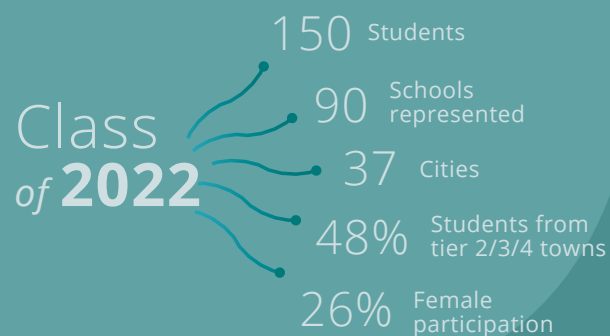
During the interview, candidates are assessed on competence and interest in the proposed research area, and its alignment with Plaksha's overarching research goals based on grand challenges.



Young Technology Scholars

Young Technology Scholars (YTS) is a two-week intensive summer program where students of Class 9–12 are exposed to real-world engineering and problem solving.

The mission of YTS is to turn the next generation of students into tinkerers, idea generators and fearless pattern sniffers with a strong motivation to identify and work on the most challenging problems of the world.



HIGHLIGHTS

YTS is a fully residential program hosted at the campus in Mohali. It has been designed by senior faculty from leading global universities in collaboration with alumni from Stanford, HBS, UC Berkeley, IITs and IIMs.

THE EXPERIENCE

The interdisciplinary program and a maker-builder approach nurtures creativity and imagination, fosters collaboration while stimulating scientific reasoning.

The YTS program features four parallel tracks

Lectures: An opportunity to learn from global academicians.

Exercises: To develop critical thinking, problem solving, creativity and use these skills in building projects.

Hands-on projects: Exposure to projects in areas of biology, robotics, games and cryptography/hacking.

Mentorship & Guest Sessions: Industry leaders share their journey and what it takes to meet goals.



Team of students work on their project during YTS 2022.



Scan to meet the YTS students

YOUNG CREATORS LEAGUE

Young Creators League, a tech innovation challenge for high school students, was launched in October 2022. Over 500 school students from 17 states across India submitted projects based on UN SDG problem statements. The final event was held on the campus and witnessed 150 school students presenting their prototypes in a grand exhibition.

“YTS²² was an amazing journey which has sparked my mind to start thinking in a different way. It has taught me how you can have fun and learn together! It showed the power tech holds.

ARJUN TANEJA
YTS 2022
Sanskriti School,
Chanakyapuri, Delhi



Student Achievements

At Plaksha, students are encouraged to become entrepreneurs, tech leaders and follow their passion through practice-based learning. Few of Plaksha's exemplary student achievements this year.



Innovation Mission Punjab

BTech students Suhani Jain, Tanisha Saraf and Anushka Desai won the Innovation Challenge at Innovation Mission Punjab for 'Most Innovative Women-led Idea of the Month'. Their idea was to build a virtual reality immersive workout experience to help people get the body and mind they desire. Additionally, Rachit Gupta's idea on the application of biomimicry-inspired unmanned crafts in the agriculture and aerospace market won the 'Most Innovative Idea of the Month' award.





Scan to meet the students of Plaksha

Yale Hack 2022 and HackNYU

Shreevardhan Shah and Saumya Choudhary, UG Class of 2025, won two global-level hackathons - HackNYU, in the Financial Empowerment track and Yale Hack 2022 (second position).

For Hack NYU they created Ministore - a mobile-first no-code and e-commerce platform, wherein users can drop in on the app and create a quick no-code site in under five minutes.

They developed FinSchool at Yale Hack 2022, a financial literacy app that teaches A-Z about managing and creating wealth in a layman's language and a gamified manner.

The Diana Award 2022

YTS scholar Vaishnavi Jaiswal and UG student Alli Ajagbe from the Class of 2025, won 'The Diana Award 2022'.

Vaishnavi launched workshops on introductory CS and entrepreneurial skills to enable girls and women to pursue education and careers in predominantly male fields. Alli won the award for his project called 'DesignIT Africa', which teaches disadvantaged kids how to prepare for computer-based examinations and train them on IT skills. Since its inception, they have managed to directly impact 912 students and reach over 20,000 teenagers bimonthly via social media.

Grace Hopper Celebration Student Scholarship

Noyonica Chatterjee from the founding BTech cohort was selected for the prestigious Grace Hopper Celebration Student Scholarship to participate in the largest gathering of women in technology across the globe. She was awarded the Scholarship by AnitaB.org to attend the virtual component of Grace Hopper Celebration.

UN Millennium Fellowship

The United Nations Academic Impact and Millennium Campus Network organize the Millennium Fellowship to elevate undergraduate leaders. Eight students of BTech Class of 2025 got selected as Millennium Fellows. They joined the ranks with over 3,000 leading peers from 200 plus campuses worldwide—all committed to having bold social impact.





Scan to meet
Plaksha's
women in tech



COMMUNITY DISCS

An artwork that truly brings out the magic of diversity and vibrancy. This presentation reinforces teamwork and collaboration through a specially created work by 20 artists comprising 59 discs are in different mediums and using varied techniques. Wood-cut print to ceramics, acrylic painting to carved sculpture, the expressions span contemporary and traditional art forms.

Student Life

Plaksha has a vibrant student life which includes student-run clubs and spaces to thrive and grow.

The campus is a sports lovers' paradise with provisions for multiple indoor and outdoor sports and activities. Other facilities like dance room, yoga studio, music room, and wellness center are also available.

CLUBS AND INITIATIVES

Plaksha has an active and diverse student body. Many have formed clubs to pursue their interests and passion.

- » E Sports
- » Plaksha Nakshatra
- » Competitive Programming Club
- » Les Quizerables
- » Plaksha Pistons
- » Webx
- » Spirituality Club
- » Organic Farming
- » Dance Society
- » Sugar Cubes
- » RASA
- » BBC / The Music Club
- » Phoenix
- » QSA
- » Robotics Club



GWIST: Girls and Women in STEM is an initiative to build a community of women leaders in the technology space in India. The aim is to encourage girls and women to start and thrive in this predominantly male-dominated domain.

Kartavya: The mission of Kartavya is to reimagine education and society through social good. Kartavya organized an in-campus blood donation drive and a blanket drive in the TriCity and settlements.

Athleda

Athleda, the students sports club, organized a 5k and 10k marathon on campus to promote fitness, wellness and a healthy lifestyle in the community.



SPACES TO THRIVE AND GROW

Multipurpose Hall

The Multipurpose Hall at Plaksha is a state-of-the-art indoor recreation area. Supported by Plaksha's corporate donor V Mart, the facility has three wooden badminton courts and one wooden basketball court on the ground floor.

Practice and training sessions by a coach are held daily for students. The Multipurpose Hall is being developed and designed as a vibrant urban space for yoga, chess and a host of other activities and games.

Kamala Devi Murlidhar Kela Dining Hall

The Dining Hall at Plaksha can seat over 150 students, faculty and team. This space was built with support by Plaksha's Founder and Trustee, Madhusudan Kela with the belief that "You are what you eat". Operational for all meals and snacks, the Dining Hall caters to all taste buds with an array of choices.

MCKS Thrive Room

Supported by the MCKS Trust Fund, the MCKS Thrive Room is a collaborative ecosystem for mental, physical and intellectual wellbeing.

Individual and group therapy sessions are organized to promote mental wellbeing. There is dedicated space on campus for yoga and Zumba. The resources to develop intellectual wellbeing include a course on yoga and ayurveda as well as guest sessions on wellbeing by industry experts.



Students in the Kamala Devi Murlidhar Kela Dining Hall.



Financial Aid

Plaksha is committed to ensuring that no deserving student is denied access to education due to financial constraints. Financial aid at Plaksha comprises need-based scholarships that keep the merit bar consistent as well as merit-based scholarships. These are possible because of generous contribution of our donors Axis Bank, ATE Chandra Foundation, Bharti Foundation, DSP Investment Managers, IndusInd Bank, Jefferies and V Mart, among others.



Scan to explore scholarships that make a difference



DISTINGUISHED SCHOLARSHIPS

Axis Bank Scholarship

Axis Bank Scholarship aims to support deserving candidates from diverse socio-economic, gender and geographical backgrounds, pursuing full-time undergraduate programs.

Ayyalasomayajula Lalitha Scholarship Fund

The Ayyalasomayajula Lalitha Scholarship Fund seeks to provide financial aid to deserving women students from a less privileged background pursuing full-time postgraduate programs at Plaksha. This scholarship fund is instituted and initially supported by the ATE Chandra Foundation (ATECF).



₹24

CR disbursed in scholarships*

83% Total students on scholarship

75% BTech girls on scholarship

33% BTech students on full scholarship





At Plaksha, I found an immersive learning environment at the intersection of deep tech, design thinking and leadership. Through applied learning, I was able to try four startup ideas. I am humbled to have been mentored by leading entrepreneurs and grateful to DSP Investments for playing a crucial part in my transformational journey.



AKASH CHOWDHARY

TLF Class of 2022, DSP Scholar

(Associate Product Manager, Fitterfly)

Bharti Scholarship

Bharti Scholarship is a highly prestigious scholarship awarded to exceptional students from diverse socio-economic backgrounds to pursue full-time undergraduate studies at Plaksha University.

Set up by the Bharti Foundation, the vision of Bharti Scholarship is to nurture bright young individuals, particularly girls, and empower them to become trailblazers of tomorrow.



Rakesh Bharti Mittal interacts with Bharti Scholars on Plaksha campus.



“We believe that one step in the right direction, no matter how small, will lay the foundation for transforming the Indian education system nurturing a vibrant knowledge hub. The ‘Bharti Scholarship’ aims to provide access to exceptional students from diverse socio-economic backgrounds, particularly the girl child, for high-quality STEM education across research, design, innovation and entrepreneurship enabling them to be future-ready. We are confident that with this scholarship program, many bright students will secure the opportunity to pursue higher studies and achieve success in their life contributing immensely to the country’s promising economic growth.”

RAKESH BHARTI MITTAL

Founder & Trustee, Plaksha University

Vice Chairman, Bharti Enterprises

Diversity, Equity and Inclusion

(supported by Mphasis)



Scan to see the Pride month celebration

“Mphasis is proud to have contributed to Plaksha University’s commitment to accessibility and inclusivity on its campus. We firmly believe that every individual, regardless of their abilities or background, deserves equal opportunities to access education and thrive. Our investment in creating an inclusive campus environment reflects our dedication to fostering a society where diversity is celebrated, and barriers are dismantled.”



NITIN RAKESH
 Founder & Trustee,
 Plaksha University
 CEO & Director, Mphasis



As part of Plaksha’s value system, higher education is made equitable by celebrating inclusive and diverse perspectives.



Attract Diverse Talent

Plaksha actively recruits and retains students, faculty and team from underrepresented and diverse backgrounds, thus fostering innovation, creativity and effective decision-making within all teams.



Champion Inclusivity

Plaksha aims to create an inclusive space through affinity groups. Engagement activities enhance personal and professional development while fostering a sense of belonging and authenticity in the workplace.



Build Equitable Systems

Plaksha embodies the principles of participative decision making, soliciting views from multiple stakeholders. Policies have been drafted basis global leading benchmarks to ensure zero discrimination.

PRISM creates an inclusive and safe space for gender and sexual groups, within and outside Plaksha.





Office of Corporate Partnerships and Careers

The Office of Corporate Partnerships and Careers (CPC) looks at internships, placement opportunities and training for career advancement of students.

The objective of the office is to ensure superlative career outcomes for all students at Plaksha by creating long-term and mutually value-adding partnerships with industry.



Students engage in an insightful conversation with Smarth Bali, a Communications Coach.

“

Our placement season starts soon after the Capstone projects. The team organizes various sessions to help students prepare for interviews. I am very grateful to our Program team and alumni network who extensively helped us by taking multiple mock interviews, practice coding sessions, reviewing our resumes and connecting us to the right people.

ARUNIMA MOR

TLF Class of 2022

(Business Analyst at Amazon)

”



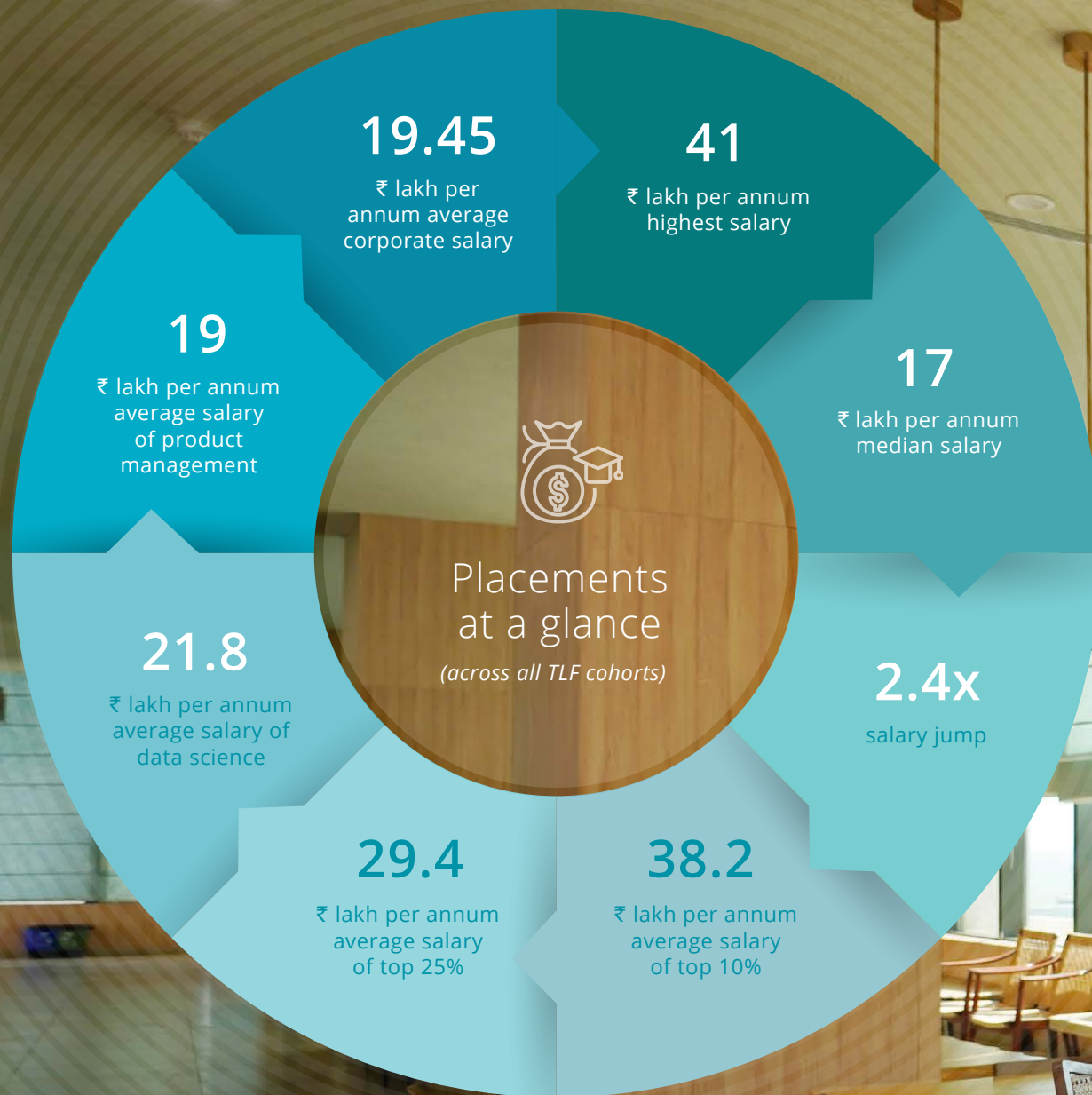
43 companies including Amazon, Arcesium, Boston Consulting Group, Cisco, Fractal Analytics, Info Edge (India) Ltd. and Walmart Labs have recruited through the office.

CPC undertakes various initiatives

- » Corporate placement support
- » Guest sessions
- » Profile building and curation support
- » Career development cell
- » Plaksha alumni network

167 TLF students have graduated in the last three years (*see page 60*). They have had successful career outcomes in the fields of data science, data engineering, data analytics, machine learning engineering, business analysis, product management and research.

Some students chose to pursue higher studies in top global institutions such as Purdue University, New York University and Centre for Theoretical Sciences. A few alumni started their own entrepreneurial ventures.





Centers and Hubs

The 50-acre campus in the Chandigarh TriCity is tech-enabled and has been designed as a living lab—a space that fosters creativity.

- » Asha Mukul Agrawal Library
- » Center for Innovation in Education
- » Center for Thinking Language and Communication
- » HDFC Innovation Hub
- » Info Edge Center for Entrepreneurship
- » Jefferies Finhub
- » Makerspace
- » Teaching Studio



HDFC INNOVATION HUB

Supported by the HT Parekh Foundation, the HDFC Innovation Hub has been instituted as an ecosystem of technology research and development. It is being designed as a center to drive widespread impact:

- » Create, develop and integrate technologies and experiences to address grand challenges with an emerging market focus
- » Promote an innovation ecosystem with an emphasis on design, hands-on learning, critique and reflection

» Nurture a collaborative ecosystem of faculty, students and researchers bringing together diverse and interdisciplinary areas of interest, inquiry and research

This hub will be spread over two floors covering an area of 25,500 square feet.



INFO EDGE CENTER FOR ENTREPRENEURSHIP

Info Edge Center for Entrepreneurship at Plaksha is where innovation and entrepreneurship intertwine. The center is committed to fostering visionary ideas and propelling innovations from laboratory to market. The Plaksha Summer Innovation Program (*see page 29*) is an initiative of the Info Edge Center for Entrepreneurship.

The center organizes minor programs, virtual incubation, resources and mentors students where guidance is provided to students. Collaborations with global universities bolster creation of startups as well as offer a gateway for international ventures into India.

CENTER FOR THINKING LANGUAGE AND COMMUNICATION

The Center for Thinking, Language and Communication (CTLC) aims to enhance the thinking, linguistic and communicative capacities of Plaksha's engineering students through a variety of initiatives. The center's unique stemX courses seek to equip the students in academic, personal, research and business communication capacities.



Scan to take the virtual campus tour

ON THE BRINK:
The sculpture draws from the idea of regeneration. While our cities are in the midst of massive transformations, people grapple with the past to define their present. The exchange of thoughts creates opportunities and opens pathways, to define new futures. Yet thoughts, like cities, remain fluid.



CENTER FOR INNOVATION IN EDUCATION

Plaksha promotes forward-looking and innovative approaches to education and learning. The Center for Innovation in Education is dedicated to enhancing student learning and faculty teaching experiences by working closely with individual academic colleagues and program teams.

JEFFRIES FINHUB

Jefferies Finhub is a learning space to develop expertise in data science, analytics and technology in the domain of finance. At Plaksha, this will be done via capstone, research projects and internships. There are multiple Refinitiv terminals that create a simulated trading environment.



Refinitiv is an LSEG (London Stock Exchange Group) business which will help students gain valuable insights on how to execute critical investing, trading and learn risk management.



MAKERSPACE

Plaksha's Makerspace is a state-of-the-art center. It offers a collaborative environment to impart experiential, hands-on learning. Makerspace helps students design, build and test prototypes, which are the first few steps towards developing novel and practical solutions to solve society's grand challenges. It is well equipped with 3D printers, CNC Milling, Lathe, Routers, Laser-cutting machines as well as metal, wood and clay fabrication machines.

The library is designed and styled in a way where students can spend long hours discussing and chatting. They feel very comfortable while learning and it doesn't become boring and burdensome. The ambience of the library, the books and research materials, will make them feel at home and enhance their learning experience.

MUKUL AGRAWAL

Founder & Trustee, Plaksha University
Founder Chairman, Param Capital



**ASHA MUKUL
AGRAWAL LIBRARY**

The Asha Mukul Agrawal Library is a grand space for research, reading and learning. It is well-stocked with books and learning resources for students and faculty. The library gives students a chance to discuss innovative ideas, collaborate on interdisciplinary project work, and benefit from multimedia tools and digital resources. It also ignites students' desire to connect with books and further their knowledge.



Scan to explore
the Asha Mukul Agrawal Library

50.12

acre campus

4 Programs
UG
TLF
YTS
PhD

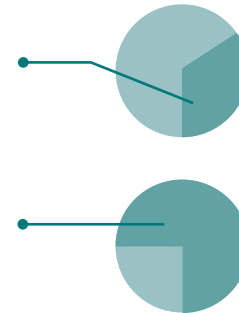
2 Research Centers




167

Alumni

33% BTech students on full scholarship
75% BTech girls on scholarship



233

Students

BTech...182
TLF.....41
PhD.....10



₹24CR

disbursed in financial aid*



10

Spaces and labs for tinkering, experiential learning, research and innovation

60

Faculty

Full-time.... 32
Visiting..... 28



KEY STATISTICS



15+

Partnerships inked and deepened with academic and industry institutions

\$100MN

commitment



100+

Founders and donors from 6 countries

“Plaksha is trying to blur the lines between different disciplines of engineering and technology. The best part about Plaksha is witnessing that many minds can come together and think of a different India.

This university has been founded with philanthropic funds from great, technical minds. Getting these minds together and building a new vision for the country is what really excites me.”

ANIL RAI GUPTA

*Founder & Trustee, Plaksha University
Chairman & Managing Director, Havells India Ltd.*



*Scan to view
Havells vision for
tech and Plaksha*

Havells India's invaluable support is furthering Plaksha in fulfilling its mission. Their generous contribution helped realize the Havells Research Building.





Research Ecosystem



Plaksha faculty are not only gifted educators, but also world-class researchers. Limitless opportunities are available at Plaksha to enable them to constantly pursue rigorous and collaborative research. The faculty regularly publish papers, attend conferences, and are hence, widely recognized as experts in their fields. The depth of their work also creates deep learning opportunities for Plaksha students.

Plaksha is committed to addressing grand challenges through interdisciplinary research centers and innovation labs.





“At Plaksha, we’ve undertaken the task of identifying and addressing the most pressing challenges facing our society. One of these is the imperative to decarbonize our energy sector. The Indorama Ventures Center for Clean Energy is committed to interdisciplinary research and impactful initiatives towards cleaner energy for all.”

PROF. VISHAL GARG
 Director, Indorama Ventures Center for Clean Energy

“The Indorama Ventures Center for Clean Energy at Plaksha embodies a noble cause, aligned with our shared commitment to sustainability. As Indorama Ventures strides towards integrating renewable energy into 25-30% of our operations by 2030, it’s evident that clean energy is not just a corporate agenda; it’s a shared imperative for businesses, industries and governments. We eagerly anticipate the remarkable journey ahead for the center.”



SUCHITRA LOHIA
 Founder & Trustee,
 Plaksha University
 Member, Board of Directors and Deputy
 Group CEO of Indorama Ventures PCL (IVL)



Indorama Ventures Center for Clean Energy

With support from Indorama Ventures, Plaksha has established a Center for Clean Energy. This center has a vision of shaping India’s energy sector towards decarbonization, self-sufficiency and grid security, ultimately delivering clean and secure energy access to all. It aims to achieve this through multifaceted approaches, including interdisciplinary research, fostering partnerships with industry and government entities, and running public awareness campaigns focused on clean energy.



RESEARCH GRANTS

» SERB Power:

Faculty:
 Dr. Monika Sharma

Project Topic:

Designing highly specific immuno-therapeutics through structure-based cytokine engineering

» STPI:

Faculty:
 Dr. Amruta R Behera &
 Dr. Shashank Tamaskar

Project Topic:

Sugarcane yield prediction

» SERB SRS:

Faculty:
 Dr. Monika Sharma

Project Topic:

Investigations of molecular mechanism & dynamics of 3’ splice site recognition by SF1 & U2AF in humans



Center for Sustainable and Precision Agriculture

The Center for Sustainable and Precision Agriculture envisions to transform Indian agriculture ecosystem through development of path breaking technologies related to automation, robotics, Internet of Things (IoT) and plant breeding and phenotyping technologies. The center’s mission is to utilize these technologies with the long-term goal of “doubling the yield of the Indian farms in a sustainable manner”.

Smart Farm Grant Challenge

Dr. Shashank Tamaskar and Dr. Amruta R Behera founded AGMitra Technologies to develop sugarcane growth solutions. AGMitra Technologies won a grant from STPI for their innovation. By using cutting-edge technologies such as AI-ML, remote sensing and IoT, their model can predict the optimum time needed for sugarcane harvest, estimate sugar content in yield and identify mature plots.





Scan to view academic conference - ConfAI



Plaksha's global faculty during the Conference on Artificial Intelligence (ConfAI).

CONFERENCE ON ARTIFICIAL INTELLIGENCE - ConfAI

Recognizing the impact of artificial intelligence and data science on society, Plaksha organizes ConfAI – an invite-only three-day academic conference. This annual academic conference cuts across the domains of digital healthcare, digital agriculture and data security and privacy.

A global scientific community of academicians, industry experts, AI researchers and practitioners come together to disseminate recent scientific advancements in the field of artificial intelligence and data science as applied to areas of social impact.



Global Academic Partnerships



Plaksha has inked partnerships with top institutions and organizations globally, who share the university's vision, to reimagine technology education and research. They are actively involved in curriculum design, delivery, faculty and student exchanges and collaborative research. This year, new partnerships were inked and old partnerships strengthened.

ACADEMIC PARTNERSHIPS

- » Cornell University
- » IISc Bengaluru
- » IIT Bombay
- » IIT Kanpur
- » IISER Mohali
- » PGIMER Chandigarh
- » Purdue University
- » SRI International
- » UC Berkeley
- » UC San Diego

INDUSTRY PARTNERSHIPS

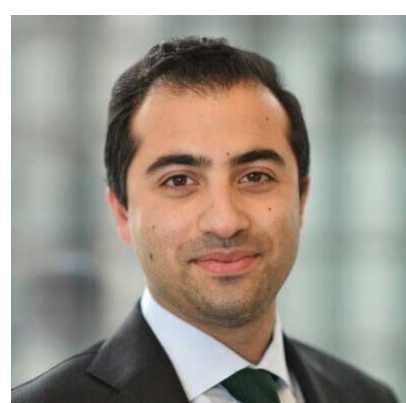
- » Boston Consulting Group
- » HRS
- » Semi-Conductor Laboratory
- » Tata Consultancy Services

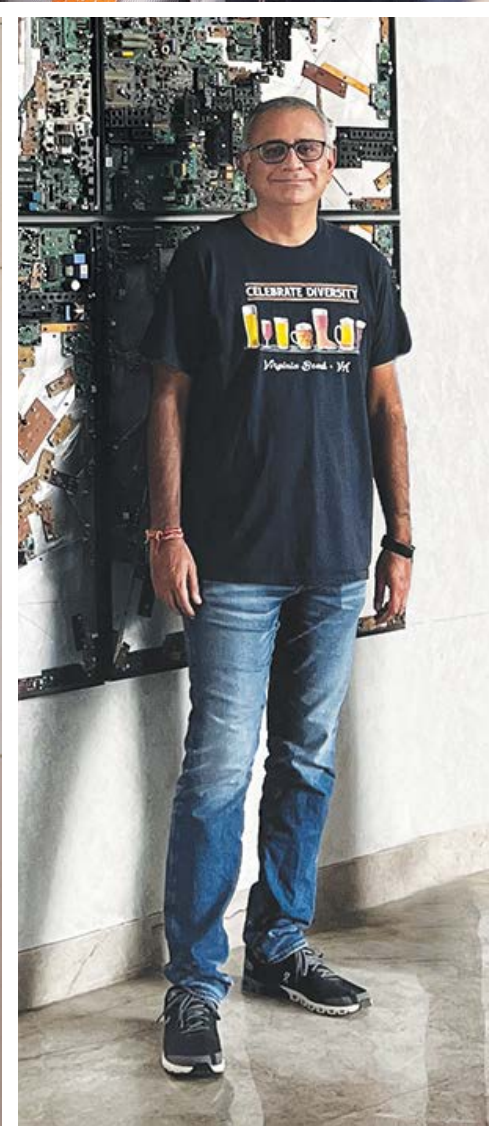


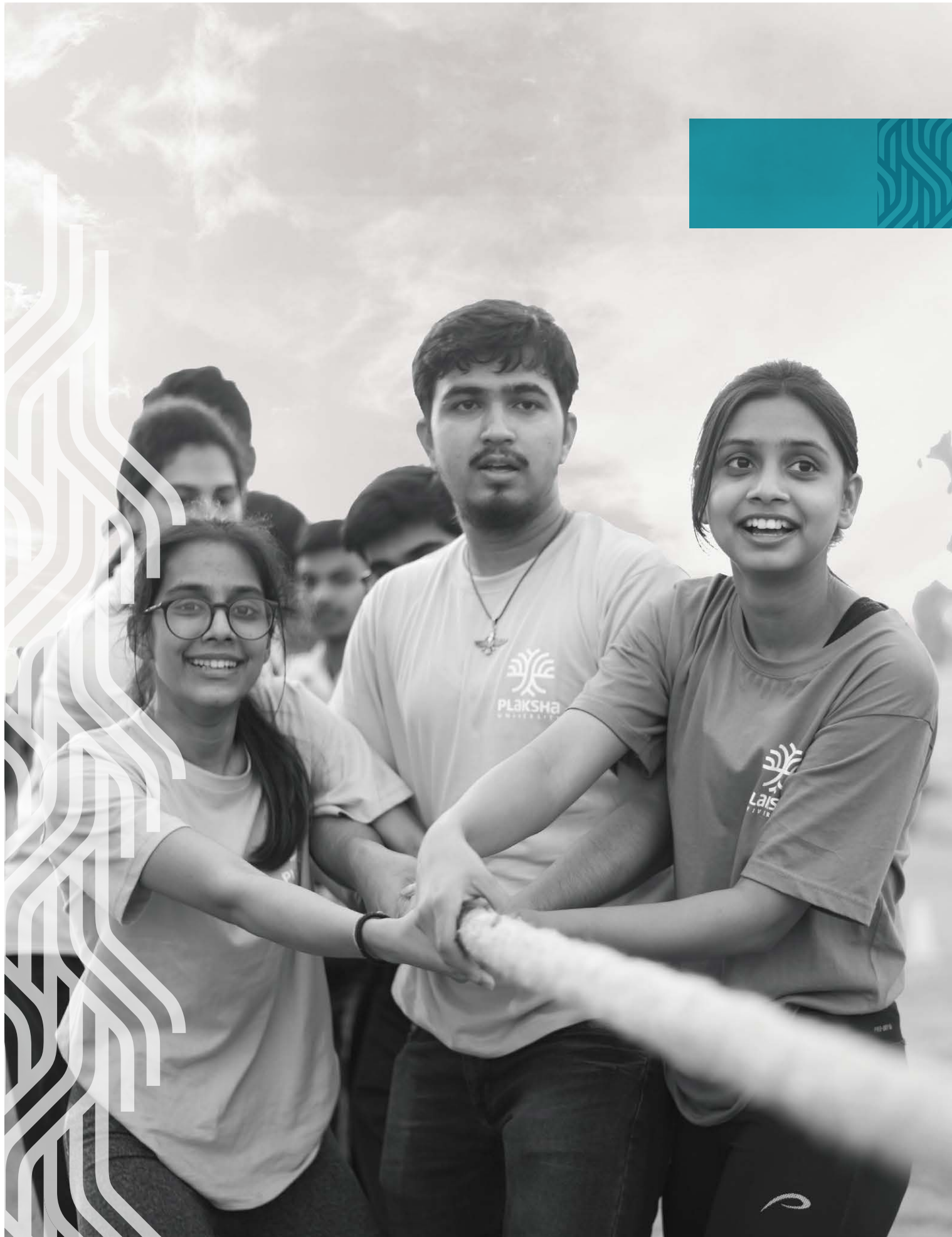
Top: Signing MoU with Cornell University. Middle left: Plaksha joins hands with IISc Bengaluru. Middle right: Signing MoU with IISER Mohali. Bottom: Plaksha faculty during the partnership with IIT Bombay.











Governance



Plaksha's sponsoring body is called Reimagining Higher Education Foundation (RHEF). RHEF is a not-for-profit, Section 8 Company, registered under Section 80G and 12AA of the India Income Tax Act 1961.

FUNDRAISING

Plaksha is built on the model of collective philanthropy. Philanthropic contributions have been made by over 100 individuals from around the globe, as well as Indian corporates through their CSR initiatives, and a handful of foundations, forming a diverse global founding community.





The university has raised financial commitments of ₹900+ crore till March 31, 2023. The raised commitments have been utilized to support institutional development, enhance academic programs, promote research and innovation to address grand challenges, and facilitate scholarships and student support to ensure equal opportunities for students from diverse backgrounds.

Individuals and organizations who have contributed to the funding, above a certain threshold, are honored as Founders & Trustees of the university. Contributions from others are recognized as Founders and Donors.



BOARD OF TRUSTEES

The Board of Trustees is the apex decision making body of RHEF. Along with the academic leadership of Plaksha, the Board of Trustees has been involved in envisioning and making key decisions for Plaksha.

Aakash Chaudhry	Gayatri Sondhi	Rajiv Kuchhal
Ajay Arora	Harish Bahl	Rakesh Bharti Mittal
Alok Mittal	Hitesh Oberoi	Rakesh Jaggi
Ambarish Raghuvanshi	Jai Rajpal	Rimy Oberoi
Ameet Gupta	Kapil Agarwal	Ritesh Malik
Anil Chawla	Kavita Iyer	Sachit Ahuja
Anil Rai Gupta	Lalit Agarwal	Sanjay Kukreja
Anjali Rattan Nashier	Madhusudan Kela	Saurabh Mittal
Anurag Goel	Manas Human	Shalini Sarin
Apurva Parekh	Manu Gulati	SK Jain
Arjun Bhagat	Mohit Thukral	Srikanth Velamakanni
Ashish Gupta	Monik Sameer Koticha	Suchitra Lohia
Ashish Rameshchandra Kacholia	Mukesh Sharma	Sujeet Kumar
Atul B Lall	Mukul Agrawal	Sumita Ambasta
Brijesh Agrawal	Natasha Malpani Oswal	Sunny Gupta
CP Gurnani	Navin Chaddha	Sunny Singh
Dalip Pathak	Neeraj Aggarwal	Ursheet Parikh
Divyata Ashiya	Niten Malhan	Vikas Khemani
Diwakar Nigam	Nitin Rakesh	Vikrant Bhargava
Gagan Hasteer	Pankaj Chaddah	Vineet Nayyar
Ganesh Ramani	Pramod Bhasin	Vivek Khare
Gaurav Suri	Rajesh Sachdeva	Vivek Vaidya

CORPORATES

Many corporates have partnered with Plaksha for the construction of infrastructure, research centers and laboratories. They support scholarships, fellowships for students, faculty development and the creation of faculty chair positions.



FOUNDERS

Aashna Gupta
Alok Goyal
Ananda Sen Gupta
Ashish Gupta
Ashish Kumar
Carl Georg Dürschmidt
Devashish Chopra
Dilipkumar Khandelwal
Guru Pangal

Krish Mantripragada
Manish Gupta
Manmohan Gupta
Pallavi Jain
Priya Jadhav
Rajiv Goel
Ravi Jasuja
Rishi Yadav
Rohit Arora

Sameer Brij Verma
Sameer Jain
Sanjay Parikh
Sudhir Jangir
Vikas Taneja
Vikram Sehgal
Vishal Tulsyan

DONORS

Aman Singla
Atin Kukreja
Deepak Raj
Dinesh Agarwal
Gopal Jain
Jitendra Gupta

Madhav Bhatkuly
Murugavel Janakiraman
Pankaj Agarwal
Rajeev Leekha
Ruchir Godura
Sachit Malhotra

Samir Mehta
V Vaidyanathan
ATE Chandra Foundation



THE GOVERNING BODY

The governance board is the apex decision-making body of the university and is headed by the Chancellor and comprises the Vice Chancellor, external experts, government representatives and nominees of RHEF. The university management is done by the Governing Body, the Chancellor and the Vice Chancellor (both of whom are senior academicians). The Chancellor is the Chair of the Governing Body and the Vice Chancellor is akin to the CEO of the university taking all day-to-day decisions.

MEMBER

S Shankar Sastry
Chairperson

Rudra Pratap

Ashish Gupta

Hitesh Oberoi

Manas Human

Neeraj Aggarwal

Rakesh Bharti Mittal

SK Jain

Sumita Ambasta

Administrative Secretary to
Govt of Punjab (*Ex-Officio*)

Eminent educationist nominated by Secretary
to Govt of Punjab, Dept of Higher Education

Sanjay Bhatnagar
Member Secretary



BOARD OF MANAGEMENT

The university also has a Board of Management (BoM) chaired by the Vice Chancellor and comprising Deans, senior

members of university leadership and some nominees of RHEF. The BoM is like the executive Board of the university.

MEMBER

Rudra Pratap
Chairperson

Director, Higher Education,
Punjab (*Ex-officio*)

Sanjay Bhatnagar
Member Secretary

Meeta Malhotra
External Member

Alok Mittal

Ambarish Raghuvanshi

Mohit Thukral

Vikrant Bhargava

Pallavi Jain

Vishal Garg

Saumya Jetley

Srikant Srinivasan

Rucha Joshi

ACADEMIC COUNCIL

The university also has an Academic Council which is the principal academic body of the university. It regulates, coordinates

and exercises general supervision over the academic policies of the university.



MEMBER

Rudra Pratap
Chairperson

Sanjay Bhatnagar
Member Secretary

Punjab Govt Nominee
(*Ex-officio*)

Late Ravi Kothari*

Ravi Jasuja

Naveen Garg

Bharadwaj Amrutur

Navakanta Bhatt

Monika Sharma

Vishal Garg

FINANCE COMMITTEE

The Finance Committee is responsible for the approval of the annual budget of the university. The Finance Committee tenders advice to the Chancellor on financial matters.

The chief accounts and finance officer is responsible for the preparation of the annual budget and the preparation of the accounts of annual income and expenditure of the university.

MEMBER

Rudra Pratap
Chairperson

Ambarish Raghuvanshi
Member (Person nominated by Foundation)

Vishal Garg
Dean

Sanjay Bhatnagar
Registrar

Umesh Kumar Sharma
Secretary (CFO)

ACADEMIC ADVISORY BOARD

Plaksha's academic vision and programs are guided by a distinguished Academic Advisory Board. They are eminent academicians and

thought leaders from across the globe - each at the forefront of transforming education in their respective institutions.

Abhijit Banerjee
MIT

Anant Agarwal
MIT

Arvind Raman
Purdue University

Ashish Nanda
Harvard Business School

BN Jain
IIT Delhi

Frances Ligler
Texas A&M University

Howard Griffiths
University of Cambridge

James Holloway
University of New Mexico

Jennifer Cochran
Stanford University

Julia Ross
Virginia Tech

Kaushik Basu
Cornell University

Krishna Palepu
Harvard Business School

Pankaj Jalote
IIT Delhi

Rajesh K Gupta
UC San Diego

Sanjay Sarma
MIT

S Shankar Sastry
UC Berkeley

Sharad Malik
Princeton University

Sriram Rajamani
Microsoft Research India Lab

Venkatesh Narayanmurthi
Harvard University

Vijay Kumar
University of Pennsylvania

Yannis C Yortsos
University of Southern California

FACULTY

RESIDENT FACULTY

Aditya Malik
Amit Sheth
Amrik Sen
Amruta Behera
Anupam Sobti
Brainerd Prince
Chaitanya Lekshmi
Dhiraj Sinha
K Gopinath
Kriti Khanna
Manoj Kannan

Monika Sharma
Nandini Kannan
Navjot Kaur
Nitin Upadhyaya
Prashanth Kumar
Rucha Joshi
Rudra Pratap
Saikat Chakraborty
Sandeep Manjanna
Sanjay Bose
Saumya Jetley

VISITING FACULTY

Aakash Tyagi
Aditya Nigam
Alexander Fred Ojala
Anuj Kapoor
Anurag Sahay
Carlos Castro
Charles Robert Kenley
David Law
Dwight Jaggard
Jitesh Panchal

Ken Singer
Kenwyn Smith
Mark Searle
M Balakrishnan
Monojit Choudhary
Nidhi Sharma
Pradeep Chhibber
Prakarsh Singh
Rachel Dzombak
Rajeev Barua

Shashank Tamaskar
Shashikant Pawar
Srikant Srinivasan
Subhasis Ray
Sunita Chauhan
Swagata Halder
Tanmoy Majilla
Tapas Pandit
Vishal Garg
Vivek Deulkar

Ramesh Soni
Ranu Roychaudhri
Sebastien Foucad
Srinivasan Vishwanathan
Sudarshan Iyengar
Sudheendra Hangal
Vaneet Aggarwal
Venkatesh Rajamanickam



EXECUTIVE LEADERSHIP

An experienced leadership team* manages the growth of programs, admissions, fundraise, administration, finance and other functions at Plaksha .



Rudra Pratap
Founding Vice Chancellor

Sanjay Bhatnagar
Registrar

Nandini Kannan
Dean - Academics

Vishal Garg
Dean - Research

Srikant Srinivasan
Associate Dean - Academics

Manoj Kannan
Associate Dean Student Life

Jitin Sahni
Chief Operating Officer

Pallavi Jain
Chief Strategist and Head of New Initiatives

Umesh Sharma
Chief Finance and Accounts Officer

Rajiv Khosla
Vice President - External Engagement

Kanchi Khanna
Senior Director - Admissions and Outreach

Srabani Ghosh
Director - Office of Corporate Partnerships and Careers

Sarika Gupta Bhattacharyya
Head - Institutional Advancement & Partnerships (RHEF)

Nina Mehta
Associate Director - Brand and Communications

Vartika Bharti
Lead - Human Resources





ALPHA, SECTOR 101
IT CITY ROAD, SAHIBZADA
AJIT SINGH NAGAR
PUNJAB, 140306
+91 172-4976900
WWW.PLAKSHA.EDU.IN